

DESIGN FEATURES:

- Steam rating: 150 psi WSP
- WORKING PRESSURE : 1000 PSI
- INVESTMENT CASTING BODY & CAP
- ME-PTFE SEAL KITS : REPLACES PTFE, RPTFE AND FPA
 LOW DEFORMATION UNDER LOAD
 LOW PERMEATION
- TEMPERATURE RATING : -45.5°C (-50°F) to 246°C (475°F)
- FULL ISO-5211 PAD FOR DIRECT MOUNT AUTOMATION
- HANDLE WITH LOCKING DEVICE
- ADJUSTABLE STEM PACKING
- BLOW - OUT - PROOF STEM
- ANTI - STATIC DEVICE
- LONG CYCLE LIFE
- TEST STANDARD: API 598
- End Connections: Threaded End
 Socket-Weld End
 Butt-Weld End

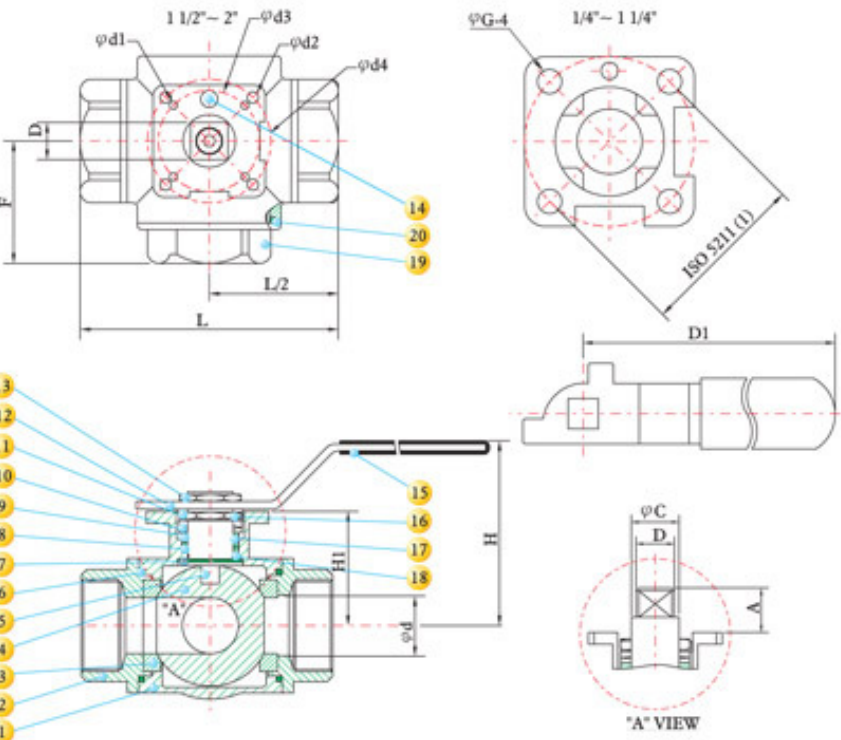
POSITION	A	B	C	D
L PORT				
T PORT				

SERIES 200



MATERIALS LIST

NO.	PART NAME	MATERIAL	QTY
1	BODY	ASTM A351 Gr.CF8M	1
2	CAP	ASTM A351 Gr.CF8M	2
3	SEAT	ME-PTFE	4
4	BALL	ASTM A351 Gr.CF8M	1
5	STEM	SS316	1
6	GASKET	ME-PTFE	2
7	THRUST WASHER	ME-PTFE	1
8	STEM PACKING	ME-PTFE	1
9	GLAND BUSH	SS304	1
10	BELLEVEILLE WASHER	SUS304-CSP	2
11	HANDLE NUT	SS304	1
12	HANDLE	SS304	1
13	HANDLE NUT	SS304	1
14	STOP PIN	SS304	1
15	HANDLE SLEEVE	PLASTIC	1
16	STOP WASHER	SS304	1
17	THRUSP WASHER	ME-PTFE	1
18	O-RING	VITON	1
19	END CAP	ASTM A351 Gr. CF8M	1
20	GASKET	ME-PTFE	2



DIMENSIONS

SIZE	A	C	D	F	H	L	D1	H1	d	d1	d2	d3	d4	ISO 5211	Cv Factor	Weight Rg	Weight Lb		
1/4"	8	0.33	8.5	0.47	12.0	0.35	9.0	1.47	37.25	3.05	77.45	2.98	75.7	4.41	112.0	5.03	38.2	0.43	11.0
3/8"	10	0.33	8.5	0.47	12.0	0.35	9.0	1.47	37.25	3.05	77.45	2.98	75.7	4.41	112.0	5.03	38.2	0.43	11.0
1/2"	15	0.33	8.5	0.47	12.0	0.35	9.0	1.47	37.25	3.05	77.45	2.98	75.7	4.41	112.0	5.03	38.2	0.50	12.7
3/4"	20	0.33	8.5	0.47	12.0	0.35	9.0	1.76	44.7	3.22	82.00	3.40	86.6	4.41	112.0	1.78	45.2	0.63	16.0
1"	25	0.44	11.4	0.62	15.8	0.43	11.0	2.02	51.4	3.69	93.70	4.03	102.4	5.37	136.5	2.22	56.5	0.79	20.0
1 1/4"	32	0.44	11.4	0.62	15.8	0.43	11.0	2.27	57.7	3.98	101.1	4.65	118.2	7.40	188.0	2.44	61.9	0.98	25.0
1 1/2"	40	0.55	14.0	0.82	20.8	0.55	14.0	2.47	62.7	4.73	120.2	4.95	125.8	7.78	197.5	3.08	78.25	1.26	32.0
2"	50	0.55	13.7	0.82	20.8	0.55	14.0	2.94	74.6	5.11	129.8	5.87	149.0	7.78	197.5	3.44	87.35	1.50	38.1

PRESSURE TEMPERATURE RATINGS

