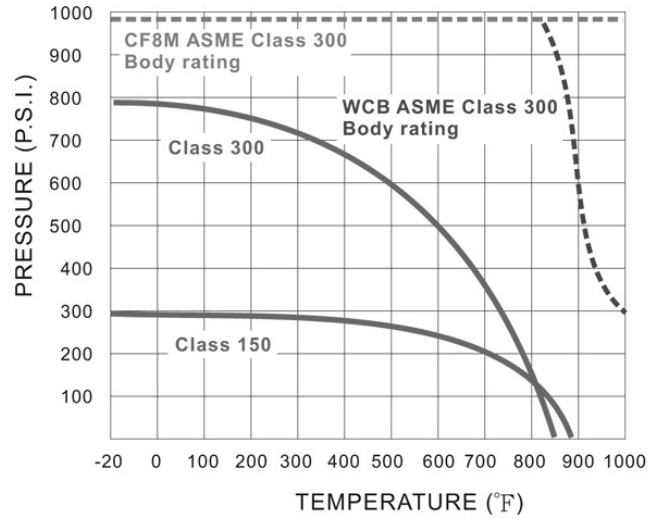
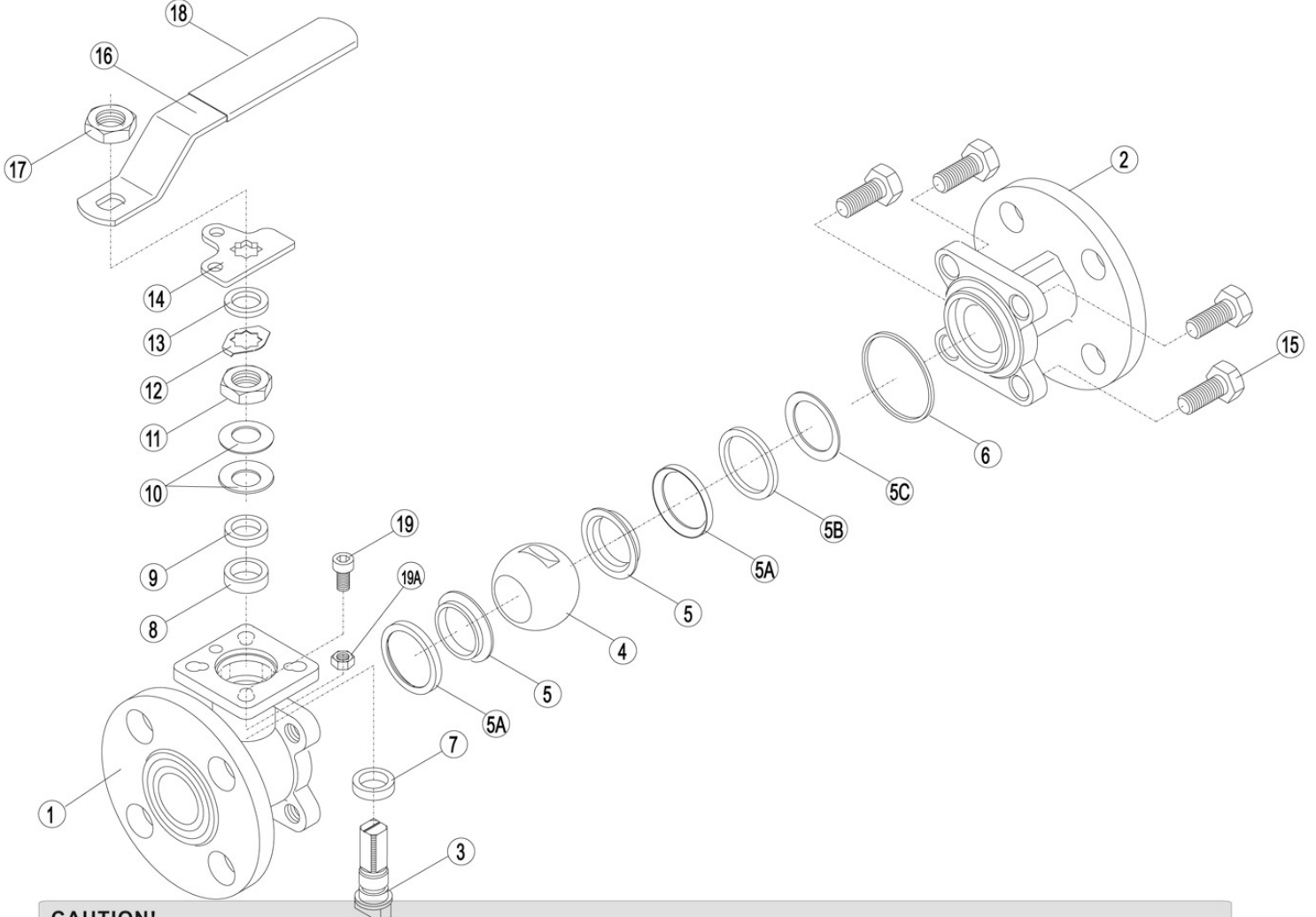


PRESSURE/ TEMPERATURE CHART

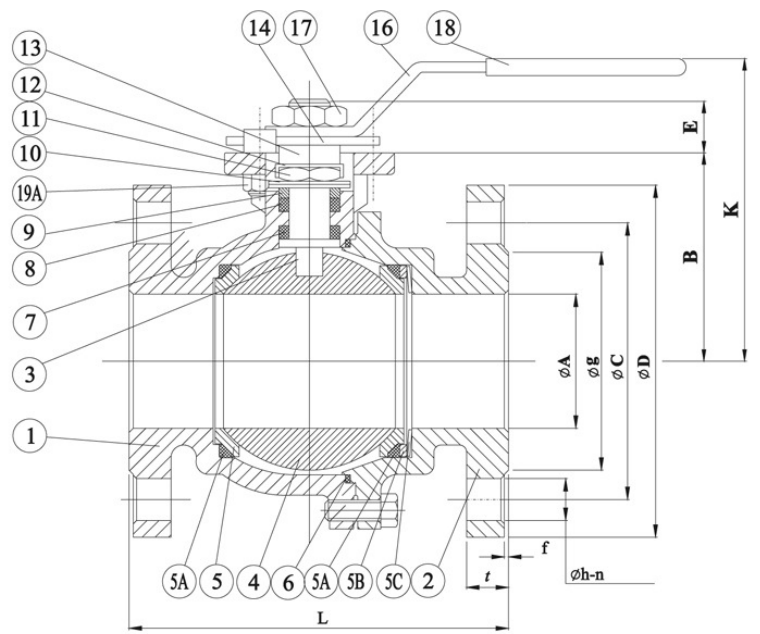
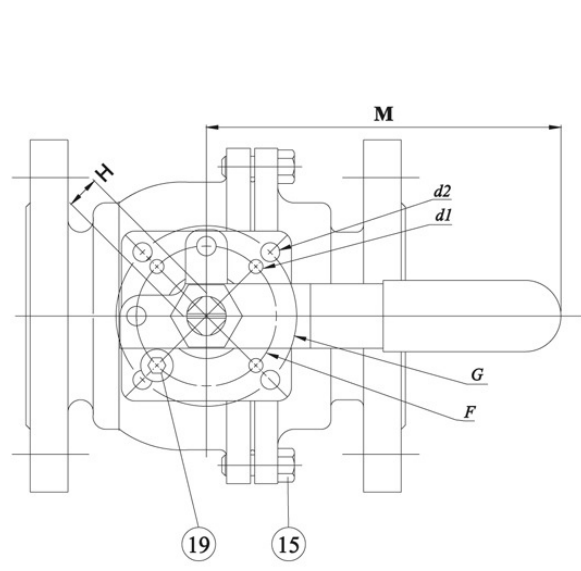
BALL VALVE SERIES 465



— For seat - - - - CF8M body - - - - WCB body



CAUTION!
 * To the metal seated ball valve, the ΔP have the limitation below 300 psi. Or the valve torque will be too high to operate, the ball/ seat will be ground soon, too.



MATERIALS LIST

ITEM	PART NAME	MATERIALS OPTION	
1	BODY	CF8M	WCB
2	FLANGED END	CF8M	WCB
3	STEM	SS 316/ 17-4	SS 316/ 17-4
4	BALL	Co.Base/ Ni Base	Co.Base/ Ni Base
5	BALL SEAT	SS316+STELLITE	SS316+STELLITE
5A	SEAT BACK SEAL	GRAPHITE	GRAPHITE
5B	SEAT HOUSING	SS 316	SS 316
5C	SPRING DISK	INCONEL	INCONEL
6	GASKET	GRAPHITE	GRAPHITE
7	THRUST WASHER	GRAPHITE	GRAPHITE
8	STEM PACKING	GRAPHITE	GRAPHITE
9	GLAND	SS 304	SS 304
10	BELLEVILLE WASHER	17-7 PH	17-7 PH
11	STEM NUT	SS 304	SS 304
12	NUT LOCK	SS 304	SS 304
13	SPACE WASHER	SS 304	SS 304
14	STOP PLATE	SS 304	SS 304
15	BOLTS	SS 304	SS 304
16	HANDLE	SS 304	SS 304
17	HANDLE NUT	SS 304	SS 304
18	HANDLE COVER	PLASTIC	PLASTIC
19	STOP PIN	SS 304	SS 304
19A	NUT	SS 304	SS 304

DIMENSIONS (mm)

SIZE	A	B	E	L	H	K	M	F	G	d1	d2	FLANGE DIMENSIONS (CLASS 150)						
												D	C	h	n	t	g	f
1/2"	15	48	12	108	9	78	130	36	42	6	6	89	60.5	16	4	11.2	35	1.6
3/4"	20	53	11.5	117	9	83	130	36	42	6	6	98	70	16	4	11.2	43	1.6
1"	25	59	14	127	11	91	165	42	50	6	7	108	79.5	16	4	11.2	51	1.6
1-1/4"	32	71	13	140	11	103	165	42	50	6	7	117	89	16	4	12.7	64	1.6
1-1/2"	38	76	16	165	14	113	205	50	70	7	9.2	127	98.5	16	4	14.3	73	1.6
2"	50	85	16	178	14	122	205	50	70	7	9.2	152	120.5	19	4	15.9	92	1.6